



# Sussex Place

33 WINTER STREET, SUSSEX, NB

115,000 SF



# 33 Winter Street, Sussex, New Brunswick



# Features

- Serving as a central hub for the province, Sussex offers a catchment of over 400,000 people within a 75 mile radius.
- Prime downtown location
- Ample parking (over 500 parking stalls)
- 16'-18' ceiling height
- Low operating expenses
- Size: 115,000 sq. ft. with +/- 12 acres

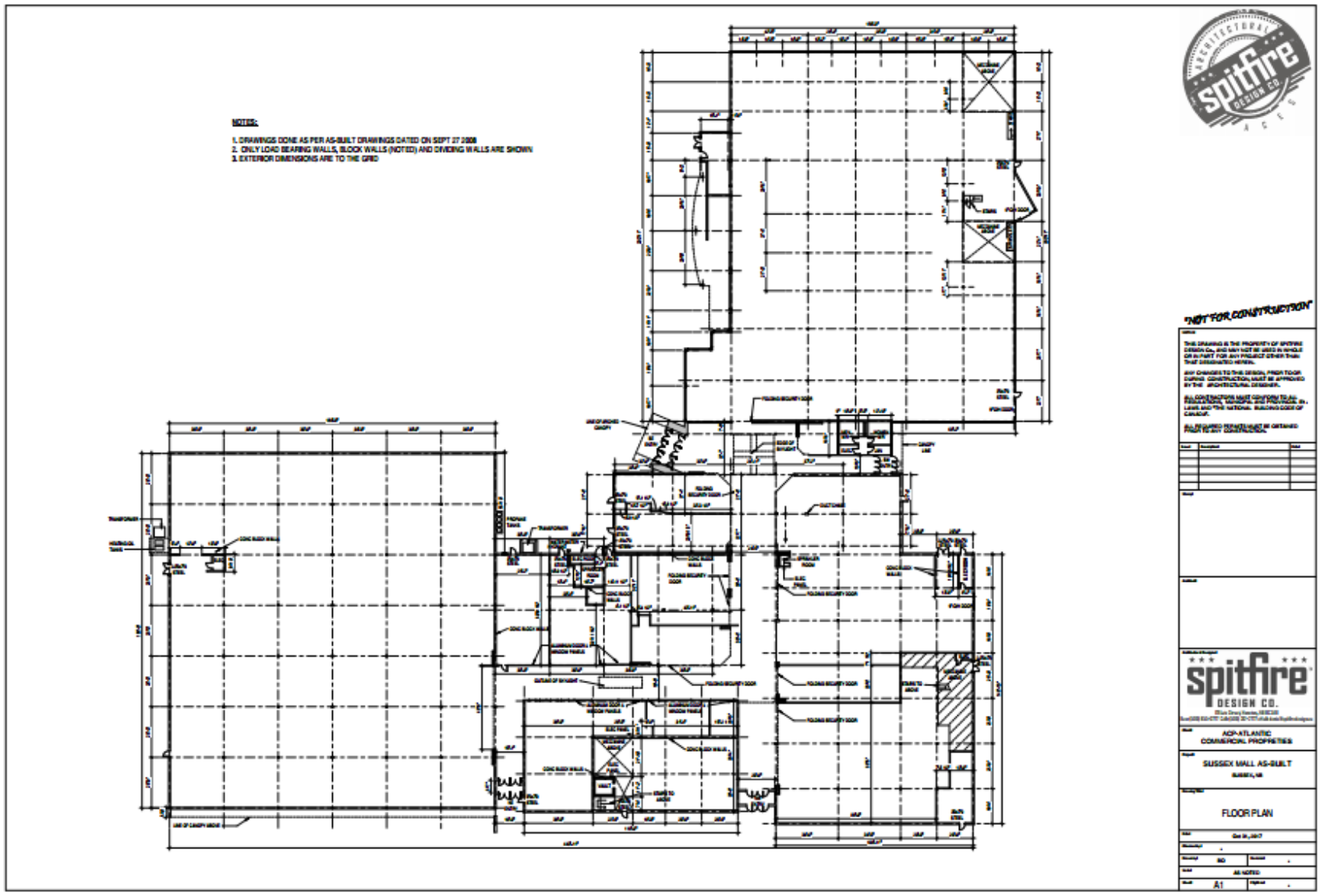
*Space Location Flexibility*



# Google Earth Photo



# Floor Plan





**SUSSEX MALL**  
*"The Downtown Mall"*

Diagram illustrating the layout of Sussex Mall, showing various sections and parking areas:

- Parking** (Top Left)
- Bargain Giant** (Bottom Left)
- Sobeys** (Top Right)
- Dollarama** (Bottom Right)
- Shoppers Drug Mart** (Bottom Right)
- Loading Dock** (Near Sobeys)
- Parking** (Bottom Center)

Winter Street

Market Avenue

Church Avenue

Paul M. Dean property

Andrew Butler property

Service Ltd property

Premier Holdings Ltd property

Susan Cathleen Bishop property

St. Louis Convention Center

St. Louis Convention Center Hotel

City Engineer

Mayor of St. Louis











# Atlantic Commercial Properties



Josh Lahanky

Business Development Manager

506 853 8000

[leasing@acpleasing.com](mailto:leasing@acpleasing.com)

[acpleasing.com](http://acpleasing.com)